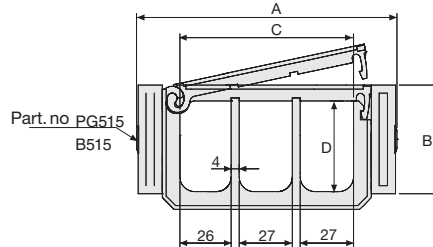


Serie Robot

SR515TN Circular Nylon Cable Chains

Inner height (D) 46 mm

Construction with side bands male/female joining system with double nylon pin which guarantees higher resistance to torsion. Cover, removable from inner radius. Movable separators insure different possibilities for varying cable layout.



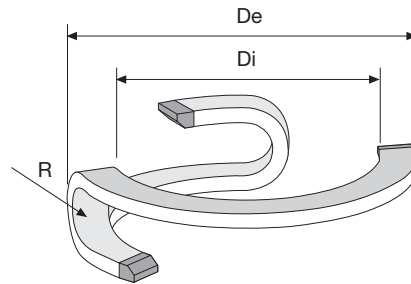
Technical characteristics

Speed	180°/s
Acceleration	180°/s ²

3

For higher requirements please consult our technical dept.

A	B	C	D	R	Weight/pitch	Chain
mm	mm	mm	mm	mm	kg	Part Number
132	55	88	46	175	0,200	SR515TN



R	Di	De
mm	mm	mm
175	1060	1340

Length of Chain

Chain	Degrees	No
Part Numbers	of Rotation	of Pitches
SR515TN	90	17
SR515TN	180	23
SR515TN	270	29
SR515TN	360	35



Steel End Brackets

The end brackets set, containing two steel plates screwed to the links, allows the two ends of the chain to be attached to the equipment. The end brackets are installed in one position offering the possibility of attaching the chain externally. (Fig. A)

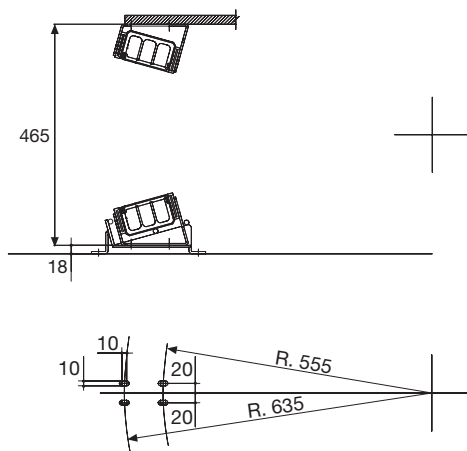


Fig. A

Support Guide

For correct functioning of the chain it is necessary that the installation is done in a specific position.

For this reason Brevetti Stendalto has observed and created a support guide which can do this. (Fig. B)

For particular applications it is possible to create support guides with attachment plates and special dimensions.

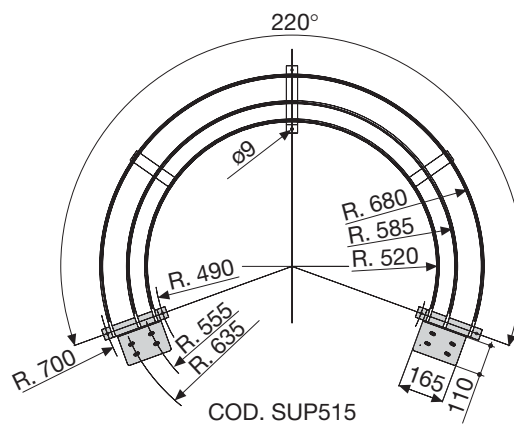


Fig. B

Steel End Brackets Part Numbers

Complete Set Assembled

Chain Type	End Brackets Set
SR515TN	A515TNKM

Complete Set Unassembled

SR515TN	A515TNK
---------	---------

For applications with rotations exceeding 200° it is necessary to use the appropriate accessories for supporting the cable chain. (see page 28).

Serie Robot

SR515TN

Circular Nylon Cable Chains

3

For further information please consult Brevetti Stendalto's Technical Office