

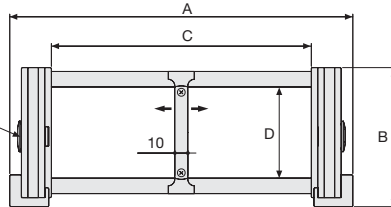
# Serie Sliding

# SR319B Nylon Cable Chain with Aluminium Rods

## Inner height (D) 70 mm

Construction with sidebands male/female joining system with triple nylon pin. Links have special skids which permit the chain to slide over itself in a special channel guide. Standard chain is equipped with aluminium rods every second pitch; on request, rods can be assembled every pitch. Inner width (C) can be supplied with special dimension.

Part. no. G319



## Separator

- Unassembled Part. no S309C
- Assembled Part. no S309MC

## Technical characteristics

|              |                     |
|--------------|---------------------|
| Speed        | 4 m/s               |
| Acceleration | 13 m/s <sup>2</sup> |

For higher requirements please consult our technical dept.

| A    | B   | C     | D  | R                       | Weight/m | Chain          |
|------|-----|-------|----|-------------------------|----------|----------------|
| mm   | mm  | mm    | mm | mm                      | kg       | Part Number    |
| 164  | 107 | 100   | 70 | 200-250-300-350-400-500 | 4,25     | SR319PSB100□*  |
| 214  | 107 | 150   | 70 | 200-250-300-350-400-500 | 4,45     | SR319PSB150□*  |
| 264  | 107 | 200   | 70 | 200-250-300-350-400-500 | 4,60     | SR319PSB200□*  |
| 314  | 107 | 250   | 70 | 200-250-300-350-400-500 | 4,75     | SR319PSB250□*  |
| 364  | 107 | 300   | 70 | 200-250-300-350-400-500 | 4,90     | SR319PSB300□*  |
| 464  | 107 | 400   | 70 | 200-250-300-350-400-500 | 5,25     | SR319PSB400□*  |
| C+64 | 107 | ..... | 70 | 200-250-300-350-400-500 |          | SR319PSB□□□□** |

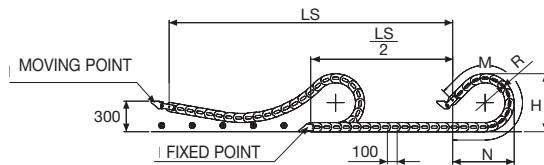
\*Complete the code by inserting the value of the radius (R). Ex. SR319PSB150□

Where: 2=200; 3=250; 4=300; 5=350; 6=400; 7=500

\*\*Complete the code by inserting the value of the quote C and the radius (R): Ex. SR319PSB□□□□□

Chain equipped with aluminium rods every pitch: complete the code by inserting the letter D.

Ex. SR319PSB200 2 □



| R   | H    | N    | M    |
|-----|------|------|------|
| mm  | mm   | mm   | mm   |
| 200 | 507  | 485  | 1200 |
| 250 | 607  | 650  | 1600 |
| 300 | 707  | 830  | 2000 |
| 350 | 807  | 1000 | 2500 |
| 400 | 907  | 1200 | 3000 |
| 500 | 1107 | 1500 | 3800 |

Length of chain (L)

Half travel distance ( $\frac{LS}{2}$ )

plus length of curve (M)

$$L = \frac{LS}{2} + M$$



Serie Sliding

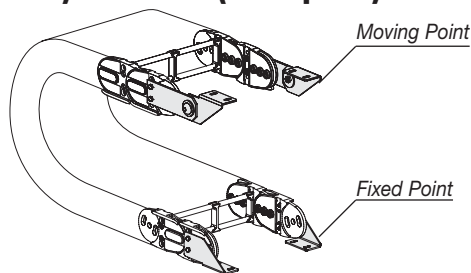
**SR319B**

**Nylon Cable Chain  
with Aluminium Rods**

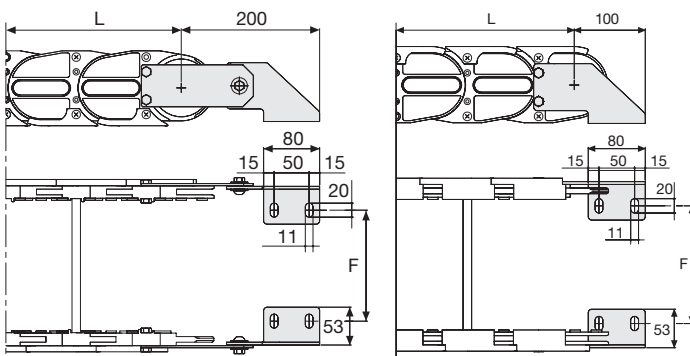
**End Brackets**

The end brackets set allows the two ends of the chain to be attached to the equipment. One set comprises two movable end brackets to install at the moving point and two standard steel end brackets to install at the fixed point.

**Bright Zinc Plated Steel Movable Type\*  
(moving point)**      **Bright Zinc Plated Steel Type\*  
(fixed point)**



Chain fixed outside the radius.



| Chain                    | F   |
|--------------------------|-----|
|                          | mm  |
| SR319PSB100              | 76  |
| SR319PSB150              | 126 |
| SR319PSB200              | 176 |
| SR319PSB250              | 226 |
| SR319PSB300              | 276 |
| SR319PSB400              | 376 |
| Special dimension F=A-88 |     |

**End Brackets  
Part Numbers**

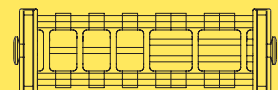
**Complete Set Assembled**

| Chain Type  | End Brackets Set |
|-------------|------------------|
| SR319PSB... | <b>A319KM</b>    |

**Complete Set Unassembled**

|             |              |
|-------------|--------------|
| SR319PSB... | <b>A319K</b> |
|-------------|--------------|

\*Available on request in stainless steel



Supplementary movable separators.

For further information please consult Brevetti Stendalto's Technical Office