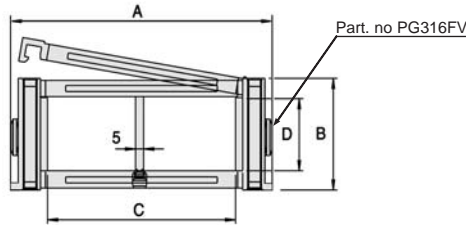


Serie Sliding

SR316SI/SR316SE Nylon Cable Chain with Removable Nylon Frame

Inner height (D) 37 mm

Construction with sidebands male/female joining system with triple nylon pin. Links have special skids which permit the chain to slide over itself in a special channel guide. Cover removable from outer radius (SR316SE) or inner radius (SR316SI). Standard chain is equipped with nylon frame every second pitch. On request it can be assembled every pitch. Movable separator can be installed to create different compartments.



Separator

- Unassembled Part. no S660A
- Assembled Part. no S660AMC

3

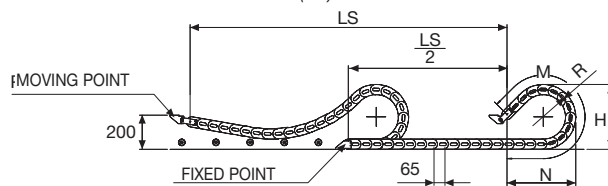
Technical characteristics

Speed	2 m/s
Acceleration	4 m/s ²

For higher requirements please consult our technical dept.

A	B	C	D	R	Weight/m	Chain
mm	mm	mm	mm	mm	Kg	Part Number
104	59	61	37	107-150-200-300	1,33	SR316SI(SE)061 □□□*
115	59	72	37	107-150-200-300	1,33	SR316SI(SE)072 □□□*
129	59	86	37	107-150-200-300	1,40	SR316SI(SE)086 □□□*
135	59	92	37	107-150-200-300	1,41	SR316SI(SE)092 □□□*
149	59	106	37	107-150-200-300	1,46	SR316SI(SE)106 □□□*
154	59	111	37	107-150-200-300	1,46	SR316SI(SE)111 □□□*
161	59	118	37	107-150-200-300	1,48	SR316SI(SE)118 □□□*
171	59	128	37	107-150-200-300	1,49	SR316SI(SE)128 □□□*
179	59	136	37	107-150-200-300	1,54	SR316SI(SE)136 □□□*
190	59	147	37	107-150-200-300	1,57	SR316SI(SE)147 □□□*
204	59	161	37	107-150-200-300	1,61	SR316SI(SE)161 □□□*
229	59	186	37	107-150-200-300	1,68	SR316SI(SE)186 □□□*
254	59	211	37	107-150-200-300	1,75	SR316SI(SE)211 □□□*
265	59	222	37	107-150-200-300	1,79	SR316SI(SE)222 □□□*
279	59	236	37	107-150-200-300	1,83	SR316SI(SE)236 □□□*
306	59	263	37	107-150-200-300	1,91	SR316SI(SE)263 □□□*
315	59	272	37	107-150-200-300	1,93	SR316SI(SE)272 □□□*
366	59	323	37	107-150-200-300	2,06	SR316SI(SE)323 □□□*
388	59	345	37	107-150-200-300	2,10	SR316SI(SE)345 □□□*
416	59	373	37	107-150-200-300	2,21	SR316SI(SE)373 □□□*

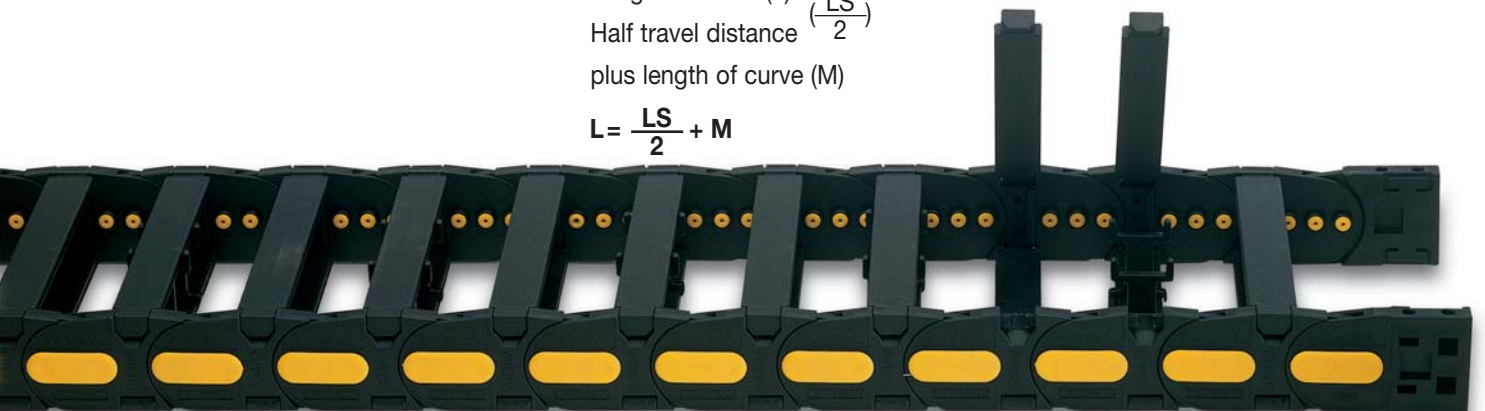
*Complete the code by inserting the value of the radius (R): Ex. SR316SI(SE)118 118 118 118
Chain equipped with nylon frame every pitch: complete the code by inserting the letter D.
Ex. SR316SI(SE)118150 D



R	H	N	M
mm	mm	mm	mm
107	273	250	585
150	359	400	1040
200	459	550	1430
300	659	900	2340

Length of chain (L)
Half travel distance ($\frac{LS}{2}$)
plus length of curve (M)

$$L = \frac{LS}{2} + M$$

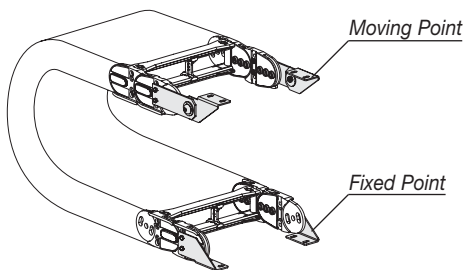


End Brackets

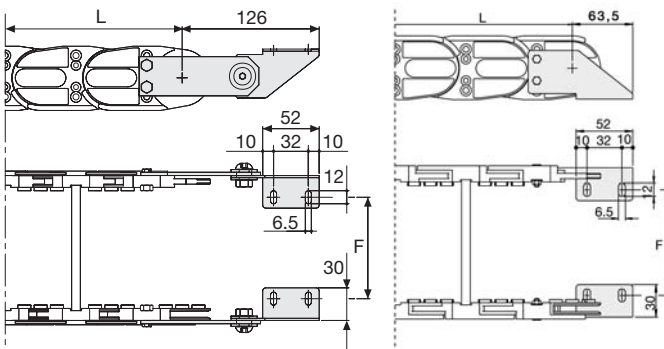
The end brackets set allows the two ends of the chain to be attached to the equipment. One set comprises two movable end brackets to install at the moving point and two standard steel end brackets to install at the fixed point.

Bright Zinc Plated Steel Movable Type* (moving point)

Bright Zinc Plated Steel Type* (fixed point)



Chain fixed outside the radius.



Chain	F
	mm
SR316SI(SE)061	56
SR316SI(SE)072	67
SR316SI(SE)086	81
SR316SI(SE)092	87
SR316SI(SE)106	101
SR316SI(SE)111	106
SR316SI(SE)118	113
SR316SI(SE)128	123
SR316SI(SE)136	131
SR316SI(SE)147	142
SR316SI(SE)161	156
SR316SI(SE)186	181
SR316SI(SE)211	206
SR316SI(SE)222	217
SR316SI(SE)236	231
SR316SI(SE)263	258
SR316SI(SE)272	267
SR316SI(SE)323	318
SR316SI(SE)345	340
SR316SI(SE)373	368

End Brackets Part Numbers

Complete Set Assembled

Chain Type	End Brackets Set
SR316SI(SE)...	A316KM

Complete Set Unassembled

SR316SI(SE)...	A316K
----------------	-------

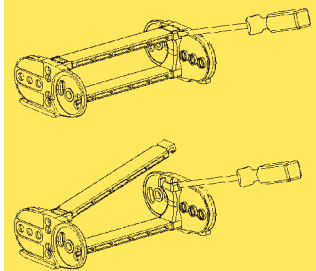
*Available on request in stainless steel

Serie Sliding

SR316SI/ SR316SE

Nylon Cable Chain
with Removable
Nylon Frame

3



How to open the cover.

Special tool to remove the connecting pivots:
part number PZ036.

For further information please
consult Brevetti Stendalto's
Technical Office