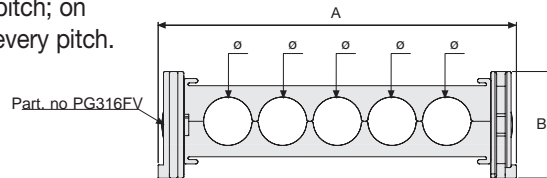


Serie Sliding

SR316F

Nylon cable chain with nylon split cross pieces with holes

Construction with sidebands male/female joining system with triple nylon pin. Standard chain is equipped with nylon cross pieces every second pitch; on request can be assembled every pitch.



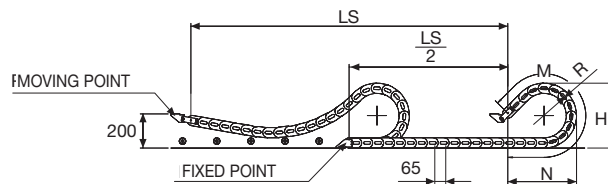
Technical characteristics

Speed	2 m/s
Acceleration	4 m/s ²

For higher requirements please consult our technical dept.

A	B	N.	Ø	R	Weight/m	Chain
mm	mm	holes	mm	mm	kg	Part Number
89	59	2	22	107-150-200-300	1,95	SR316001 □ *
155	59	6	17	107-150-200-300	2,20	SR316002 □ *
193	59	6+2	17+20	107-150-200-300	2,45	SR316003 □ *
214	59	6	25	107-150-200-300	2,70	SR316004 □ *
113	59	3	23	107-150-200-300	2,10	SR316005 □ *

*Complete the code by inserting the value of the radius (R): Ex. SR316002 [2]
Where: 2=107; 3=150; 4=200; 6=300



R	H	N	M
mm	mm	mm	mm
107	273	250	585
150	359	400	1040
200	459	550	1430
300	659	900	2340

Length of chain (L)
Half travel distance ($\frac{LS}{2}$)
plus length of curve (M)

$$L = \frac{LS}{2} + M$$

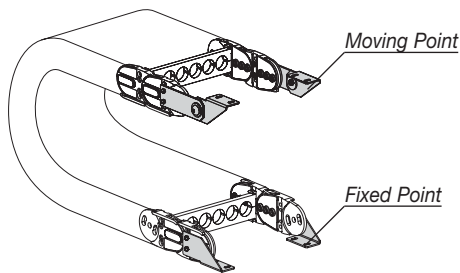


End Brackets

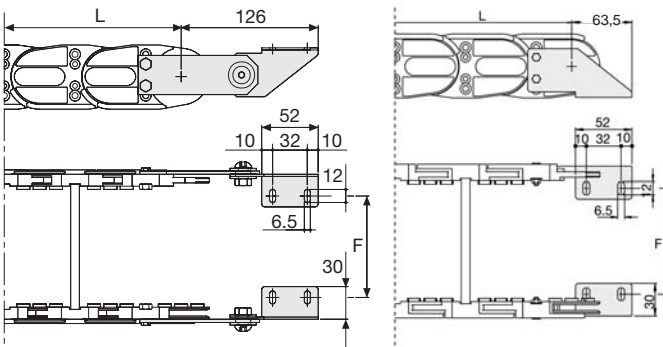
The end brackets set allows the two ends of the chain to be attached to the equipment. One set comprises two movable end brackets to install at the moving point and two standard steel end brackets to install at the fixed point.

Bright Zinc Plated Steel Movable Type* (moving point)

Bright Zinc Plated Steel Type* (fixed point)



Chain fixed outside the radius.



Chain	F
	mm
SR316001	41
SR316002	107
SR316003	145
SR316004	166
SR316005	65

End Brackets Part Numbers

Complete Set Assembled

Chain Type	End Brackets Set
SR31600...	A316KM

Complete Set Unassembled

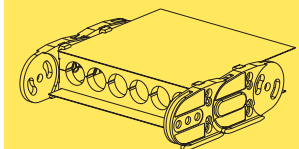
SR31600...	A316K
------------	-------

*Available on request in stainless steel

Serie Sliding

SR316F

Nylon cable chain with nylon split cross pieces with holes



Steel laminar cover.

Special tool to remove the connecting pivots: part number PZ036.

For further information please consult Brevetti Stendalto's Technical Office