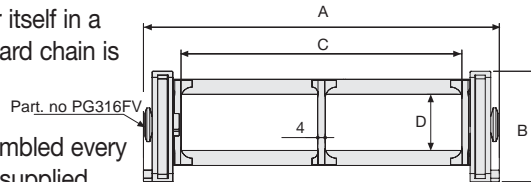


Serie Sliding

SR316B Nylon Cable Chain with Aluminium Rods

Inner height (D) 30 mm

Construction with sidebands male/female joining system with triple nylon pin. Links have special skids which permit the chain to slide over itself in a special channel guide. Standard chain is equipped with aluminium rods every second pitch. On request they can be assembled every pitch. Inner width (C) can be supplied with special dimension.



Separator

- Unassembled	Part. no S2000F
- Assembled	Part. no S2000FMC

Technical characteristics

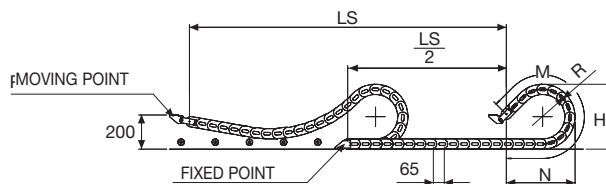
Speed	2 m/s
Acceleration	4 m/s ²

For higher requirements please consult our technical dept.

A	B	C	D	R	Weight/m	Chain
mm	mm	mm	mm	mm	kg	Part Number
115	59	75	30	107-150-200-300	1,75	SR316B075 □*
140	59	100	30	107-150-200-300	1,80	SR316B100 □*
190	59	150	30	107-150-200-300	1,90	SR316B150 □*
240	59	200	30	107-150-200-300	2,05	SR316B200 □*
290	59	250	30	107-150-200-300	2,15	SR316B250 □*
340	59	300	30	107-150-200-300	2,25	SR316B300 □*
C+40	59	30	107-150-200-300		SR316B □□□ □**

*Complete the code by inserting the value of the radius (R): Ex. SR316B075 □
Where: 2=107; 3=150; 4=200; 6=300

**Complete the code by inserting the value of the quote C and the radius (R): Ex. SR316B □ □ □ □ □
Chain equipped with aluminium rods every pitch: complete the code by inserting the letter D.
Ex. SR316B0753 □



R	H	N	M
mm	mm	mm	mm
107	273	250	585
150	359	400	1040
200	459	550	1430
300	659	900	2340

Length of chain (L)

Half travel distance ($\frac{LS}{2}$)
plus length of curve (M)

$$L = \frac{LS}{2} + M$$

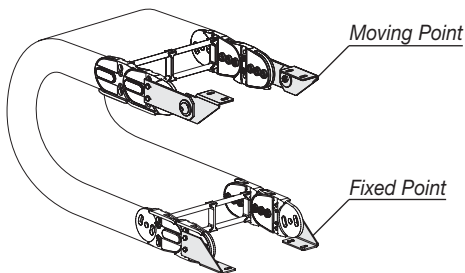


End Brackets

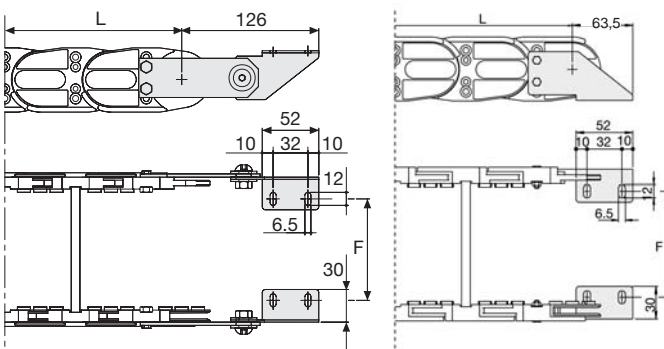
The end brackets set allows the two ends of the chain to be attached to the equipment. One set comprises two movable end brackets to install at the moving point and two standard steel end brackets to install at the fixed point.

Bright Zinc Plated Steel Movable Type* (moving point)

Bright Zinc Plated Steel Type* (fixed point)



Chain fixed outside the radius.



Chain	F
	mm
SR316B075	67
SR316B100	92
SR316B150	142
SR316B200	192
SR316B250	242
SR316B300	292
Special dimension F=A-48	

End Brackets Part Numbers

Complete Set Assembled

Chain Type	End Brackets Set
SR316B...	A316KM

Complete Set Unassembled

SR316B...	A316K
-----------	-------

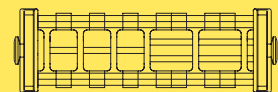
*Available on request in stainless steel

Serie Sliding

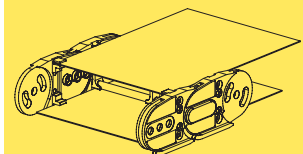
SR316B

Nylon Cable Chain with Aluminium Rods

3



Supplementary movable separators.



Steel laminar cover.

Special tool to remove the connecting pivots: part number PZ036.

For further information please consult Brevetti Stendalto's Technical Office