

Serie Medium

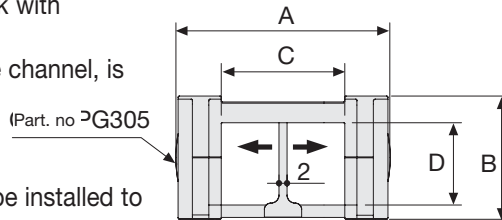
SR305 Nylon Cable Chain

Inner height (D) 20 mm

Construction by single link with antifriction pivot.

Used with a special guide channel, is particularly suitable to long travel distance applications.

Movable separators can be installed to create different compartments.



Separator

- Unassembled	Part. no S305
- Assembled	Part. no S305MC

Technical characteristics when self-supported

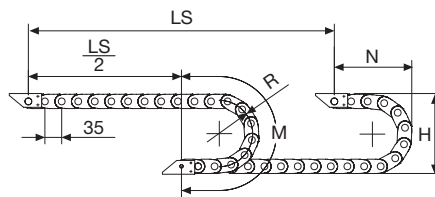
Speed	10 m/s
Acceleration	50 m/s ²

Technical characteristics when used in long travel distance

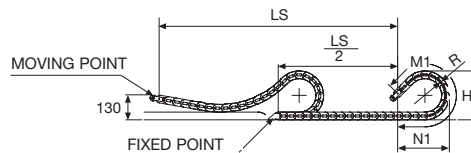
Speed	0,5 m/s
Acceleration	1 m/s ²

For higher requirements please consult our technical dept.

A	B	C	D	R	Weight/m	Chain
mm	mm	mm	mm	mm	kg	Part Number
52	30	30	20	50	0,90	SR305008
52	30	30	20	70	0,90	SR305010
52	30	30	20	120	0,90	SR305020
52	30	30	20	150	0,90	SR305050
72	30	50	20	50	1,00	SR305009
72	30	50	20	70	1,00	SR305030
72	30	50	20	120	1,00	SR305040
72	30	50	20	150	1,00	SR305060



R	H	N	M	N1	M1
mm	mm	mm	mm	mm	mm
50	130	105	230	140	300
70	170	120	290	150	400
120	270	175	450	310	840
150	330	205	545	410	1100



Length of chain (L)

Half travel distance ($\frac{LS}{2}$)

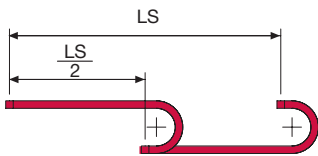
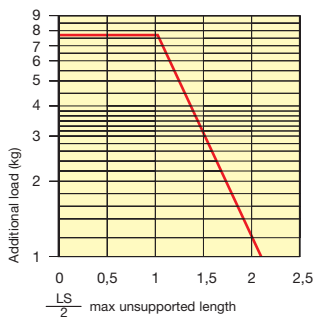
plus length of curve (M) or (M1)

$$L = \frac{LS}{2} + M \text{ or } M1$$



Self-Supporting Capacity Diagram

The maximum length of the self-supporting capacity ($\frac{LS}{2}$) in relationship to the weight of the cables and hoses contained per linear metre.



For applications with $\frac{LS}{2}$ and weights not included in the area of the diagram showing self-supporting capacity, verify the possible use of support rollers (see page 30).

End Brackets

The end brackets set allows the two ends of the chain to be attached to the equipment.

Nylon Type

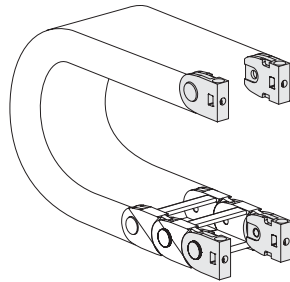


Fig. A

End brackets can be mounted in any position. (Fig. A)
See end brackets mounting variations: page 31.

Bright Zinc Plated Steel Type*

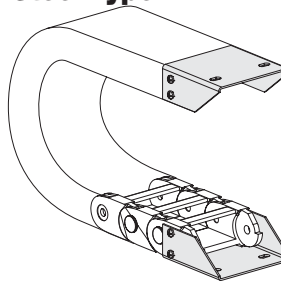
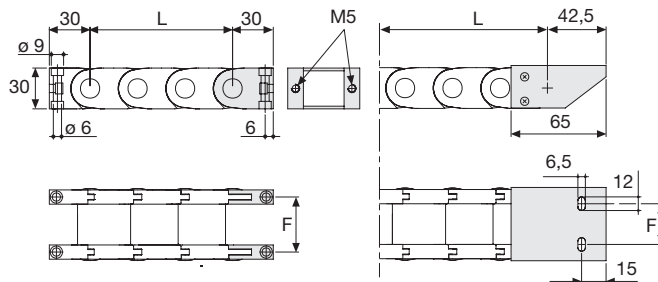


Fig. B

End brackets can be mounted in any position. (Fig. B)
See end brackets mounting variations: page 31.



Chain	F
	mm
SR305 C=30	40,5
SR305 C=50	60,5

Chain	F
	mm
SR305 C=30	30,5
SR305 C=50	51,5

Nylon Type Part Numbers

Complete Set Assembled

Chain Type	End Brackets Set
SR305 C=30	AN305KM
SR305 C=50	AN305KM

Complete Set Unassembled

Chain Type	End Brackets Set
SR305 C=30	AN305K
SR305 C=50	AN305K

Bright Zinc Plated Steel Type Part Numbers

Complete Set Assembled

Chain Type	End Brackets Set
SR305 C=30	AP305KM □ **
SR305 C=50	AG305KM □ **

Complete Set Unassembled

Chain Type	End Brackets Set
SR305 C=30	AP305K □ **
SR305 C=50	AG305K □ **

* Available on request in stainless steel

** 1=pos. 1; 2=pos.2; 3=pos.3

See end brackets mounting variations page 31.

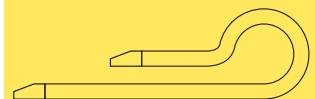
Serie Medium

SR305

Nylon Cable Chain



Special tool to remove the connecting pivots: part number PZ010.



Suitable to long travel distance. To choose the guide channel see page 78.

For further information please consult Brevetti Stendalto's Technical Office