

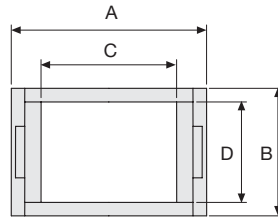
Serie Light

SR30090-SR30091 Nylon Cable Chain

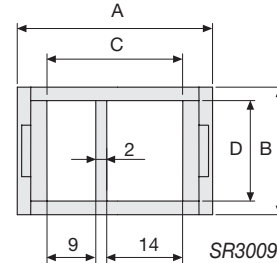
Inner height (D) 18,5 mm

Construction by single link with central large pivot which guarantees high resistance to torsion and tensile strength.

Used with a special guide channel, is particularly suitable to long travel distance applications like textile plant.



SR30090-SR30091



SR30091S

Technical characteristics when self-supported

Speed	10 m/s
Acceleration	50 m/s ²

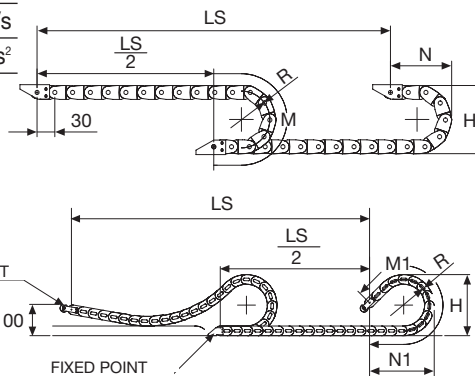
Technical characteristics when used in long travel distance

Speed	0,3 m/s
Acceleration	1 m/s ²

For higher requirements please consult our technical dept.

A	B	C	D	R	Weight/m	Chain
mm	mm	mm	mm	mm	kg	Part Number
29	23,5	18	18,5	033-038-048-070-100	0,32	SR30090□□□*
36	23,5	25	18,5	033-038-048-070-100	0,36	SR30091□□□*
36	23,5	25	18,5	033-038-048-070-100	0,36	SR30091□□□S*

*Complete the code by inserting the value of the radius (R): Ex. SR30090 033 038 048 070 100



R	H	N	M	N1	M1
mm	mm	mm	mm	mm	mm
033	89,5	75	165	110	230
038	99,5	80	180	120	240
048	119,5	90	210	130	270
070	163,5	112	280	170	460
100	223,5	145	375	270	730

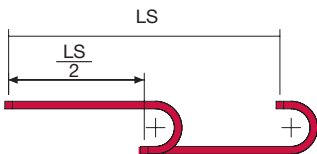
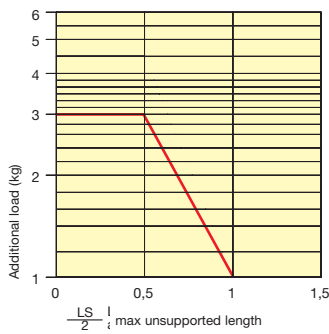
Length of chain (L)
Half travel distance ($\frac{LS}{2}$)
plus length of curve (M) or (M1)

$$L = \frac{LS}{2} + M \text{ or } M1$$



Self-Supporting Capacity Diagram

The maximum length of the self-supporting capacity ($\frac{LS}{2}$) in relationship to the weight of the cables and hoses contained per linear metre.



For applications with $\frac{LS}{2}$ and weights not included in the area of the diagram showing self-supporting capacity, verify the possible use of support rollers (see page 30).

Bright Zinc Plated Steel End Brackets*

The end brackets set allows the two ends of the chain to be attached to the equipment.

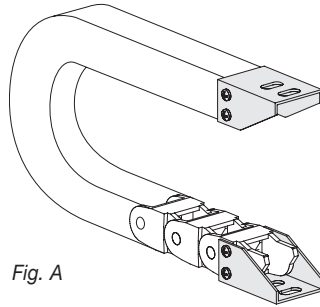
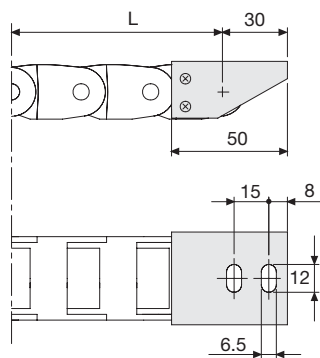


Fig. A

Chain fixed outside the radius. (Fig. A) See end brackets mounting variations: page 31.



Bright Zinc Plated Steel End Brackets Part Numbers

Complete Set Assembled

Chain Type	End Brackets Set
SR30090	A30090KM □ **
SR30091	A30091KM □ **
SR30091S	A30091KM □ **

Complete Set Unassembled

Chain Type	End Brackets Set
SR30090	A30090K □ **
SR30091	A30091K □ **
SR30091S	A30091K □ **

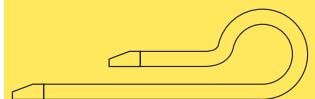
* Available on request in stainless steel
 ** 1=pos. 1; 2=pos.2; 3=pos.3
 See end brackets mounting variations page 31.

Serie Light

SR30090

SR30091

Nylon Cable Chain



Suitable to long travel distance. To choose the guide channel see page 50.

For further information please consult Brevetti Stendalto's Technical Office