

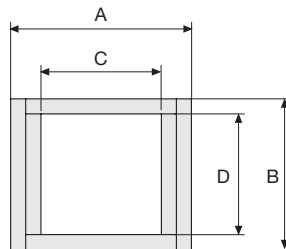
# Serie Light

# SR200 Nylon Cable Chain

## Inner height (D) 12 mm

Construction by single link.

Very smooth chain particularly suitable for small automatic machines like printers, measurement equipment etc.



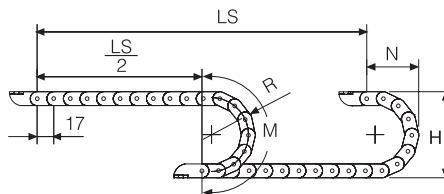
## Technical characteristics when self-supported

Speed	10 m/s
Acceleration	50 m/s <sup>2</sup>

For higher requirements please consult our technical dept.

A	B	C	D	R	Weight/m	Chain
mm	mm	mm	mm	mm	kg	Part Number
18	15	12	12	018-030-040	0,13	SR20012□□□*
31	15	25	12	018-030-040	0,14	SR20025□□□*
41	15	35	12	018-030-040	0,15	SR20035□□□*

\*Complete the code by inserting the value of the radius (R): Ex. SR20012 □□□\*



R	H	N	M
mm	mm	mm	mm
018	51	45	95
030	75	55	130
040	95	70	165

Length of chain (L)

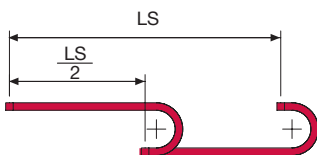
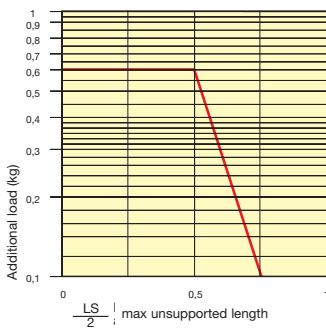
Half travel distance ( $\frac{LS}{2}$ )  
plus length of curve (M)

$$L = \frac{LS}{2} + M$$



### Self-Supporting Capacity Diagram

The maximum length of the self-supporting capacity ( $\frac{LS}{2}$ ) in relationship to the weight of the cables and hoses contained per linear metre.



For applications with  $\frac{LS}{2}$  and weights not included in the area of the diagram showing self-supporting capacity, verify the possible use of support rollers (see page 30).

### End Brackets

The end brackets set allows the two ends of the chain to be attached to the equipment.

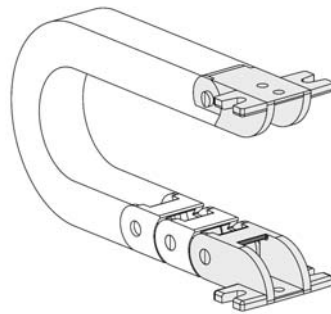
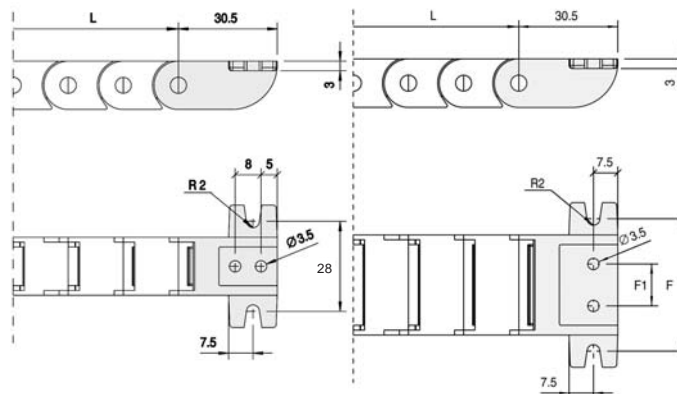


Fig. A

Chain fixed outside the radius. (Fig. A)  
See end brackets mounting variations: page 31.



Chain	F1 mm	F mm
SR20025...	13	41
SR20035...	23	51

### Type A Part Numbers

#### Complete Set Assembled

Chain Type	End Brackets Set
SR20012...	AN20012KM
SR20025...	AN20025KM
SR20035...	AN20035KM

#### Complete Set Unassembled

Chain Type	End Brackets Set
SR20012...	AN20012K
SR20025...	AN20025K
SR20035...	AN20035K

Serie Light

**SR200**

Nylon Cable Chain