

Serie Steel

BS3500

Cable Chains in Bright Zinc Plated Steel

Inner height (D) 65 mm

Chain with side bands in bright zinc plated steel.⁽¹⁾

Aluminium split cross pieces created by design or aluminium draw plates with movable separators in nylon.

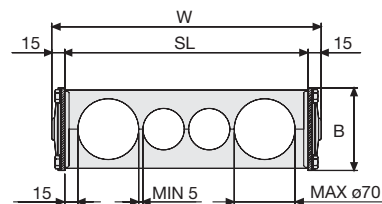
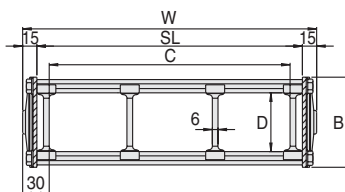
Inner width (C) can be supplied with special dimension.

⁽¹⁾ Available on request in stainless steel.

Technical characteristics when self-supported

Speed	0,5 m/s
Acceleration	2 m/s ²

For higher requirements please consult our technical dept.



Separator

- Unassembled Part. no ST3500F
- Assembled Part. no ST3500FMC

Aluminium Draw Plates with Separators in Nylon

W	B	C	D	R	Weight/m	Chain
mm	mm	mm	mm	mm	kg	Part Number
160	95	100	65	200-250-300-350-400-450-500-600	21,50	3500T100□□□*
210	95	150	65	200-250-300-350-400-450-500-600	22,50	3500T150□□□*
260	95	200	65	200-250-300-350-400-450-500-600	23,40	3500T200□□□*
310	95	250	65	200-250-300-350-400-450-500-600	24,30	3500T250□□□*
360	95	300	65	200-250-300-350-400-450-500-600	25,30	3500T300□□□*
460	95	400	65	200-250-300-350-400-450-500-600	27,00	3500T400□□□*
C+60	95	...	65	200-250-300-350-400-450-500-600		3500T□□□□□**

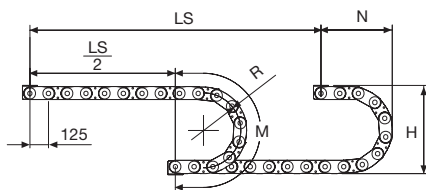
* Complete the code by inserting the value of the radius (R): Ex. 3500T150 □□□□

** Complete the code by inserting the value of the quote C and the radius (R): Ex. 3500T □□□□□□□□□□
Chain equipped with aluminium draw plates every pitch: complete the code by inserting the letter D.
Ex. 3500T150250 □□

Aluminium Split Cross Piece Created by Design

W	B	R	Chain
mm	mm	mm	Part Number
SL+30	95	200-250-300-350-400-450-500-600	3500TL □□□□□□***

*** Complete the code by inserting the value SL and the radius (R): Ex. 3500TL □□□□□□□□□□



Length of chain (L)

Half travel distance ($\frac{LS}{2}$)

plus length of curve (M)

$$L = \frac{LS}{2} + M$$

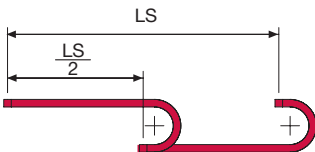
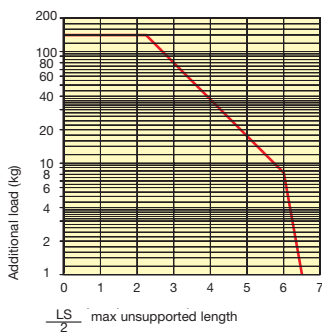
R	H*	N	M
mm	mm	mm	mm
200	512	375	880
250	612	425	1040
300	712	480	1200
350	812	525	1350
400	912	575	1510
450	1012	625	1670
500	1112	675	1825
600	1312	775	2140

* The total space taken in height may vary in relationship to the pre-set up to 10 mm/m.



Self-Supporting Capacity Diagram

The maximum length of the self-supporting capacity ($\frac{LS}{2}$) in relationship to the weight of the cables and hoses contained per linear metre.



For applications with $\frac{LS}{2}$ and weights not included in the area of the diagram showing self-supporting capacity, verify the possible use of support rollers (see page 30).

Bright Zinc Plated Steel End Brackets

The end brackets set, containing four steel plates screwed to the links, allows the two ends of the chain to be attached to the equipment.

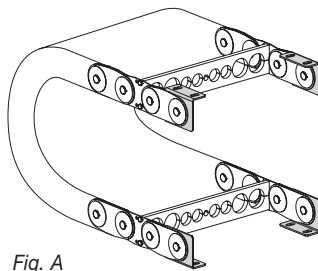
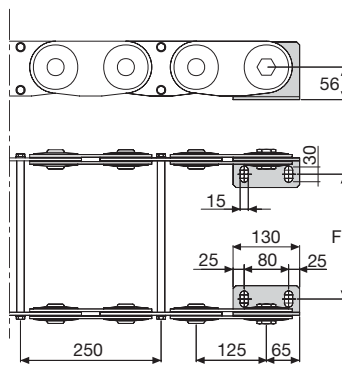


Fig. A

Chain fixed outside the radius. (Fig. A) See end brackets mounting variations.



Chain	F
	mm
BS3500T100	80
BS3500T150	130
BS3500T200	180
BS3500T250	230
BS3500T300	280
BS3500T400	380
Special dimension F=W-80	

Bright Zinc Plated Steel End Brackets Part Number

Complete Set Assembled

Chain Type	End Brackets Set
BS3500...	A3500KM

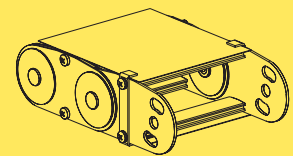
Complete Set Unassembled

BS3500...	A3500K
-----------	--------

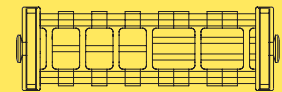
Serie Steel

BS3500

Cable Chains in Bright Zinc Plated Steel



Steel laminar cover.



Supplementary movable separators.